

EXISTING Restaurant W/ DRIVE THRU

CROSS ACCESS W/STARBUCKS & PUBLIX
ACCESS TO TRAFFIC SIGNAL
SIGNAGE ON LEBANON RD

GREAT LOCATION:

- Intersection of Mt. Juliet & Lebanon Rd.
- Neighbored to Starbucks, Publix & McDonald's.

- **Daily traffic count:** 26,365

- **Estimated Median Numbers**

1M radius:

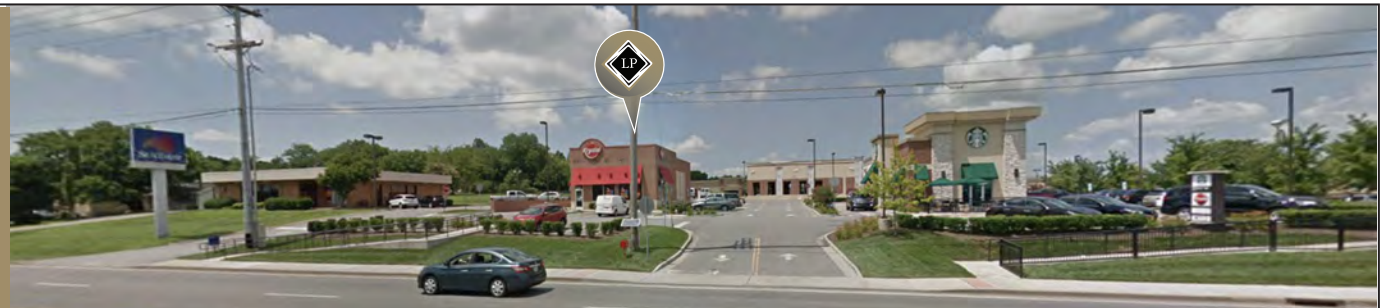
Pop: 2,472; Inc: \$83K; Age: 39.2

3M radius:

Pop: 22,091; Inc: \$85K; Age: 40.7

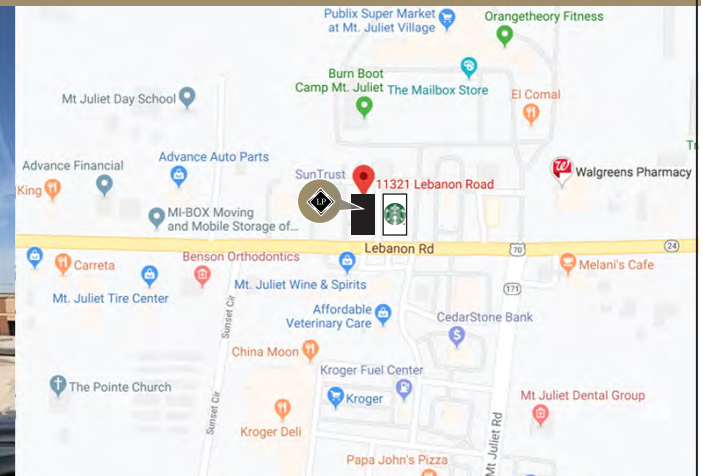
5M radius:

Pop: 64,160; Inc: \$83K; Age: 40.3



11321 LEBANON RD MT. JULIET, TN 37122

MT. JULIET WAS NAMED #16 BOOMTOWN IN THE US ACCORDING TO REALTOR.COM



LINEBERRY PROPERTIES

Mark Lineberry
Lineberry Properties, Inc.
LineberryProperties.com
P.O. Box 1767
Mt. Juliet, TN 37121

Phone (615) 758-5836
Cell (615) 478-3130

